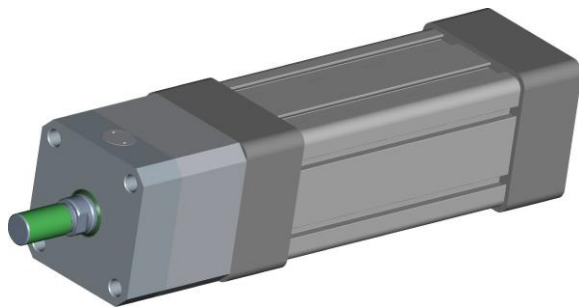


FBC - CYLINDER BLOCKING ELEMENT

Dynamic braking element for pneumatic cylinders. It ensures the clamping of the shaft even when it is still moving.



It is a pneumatic device capable of exerting a high holding force through the principle of the “wedge”, a technology implemented in ERRE.DI. braking elements.

FBC comes in normally open and normally closed versions.

FBC dimensions are small and these elements can be assembled on cylinders in compliance with **1552-AFNOR-DIN** standards.

In compliance with fundamental requirements of safety and health protection included in **Machinery Directive 2006/42/CE**.

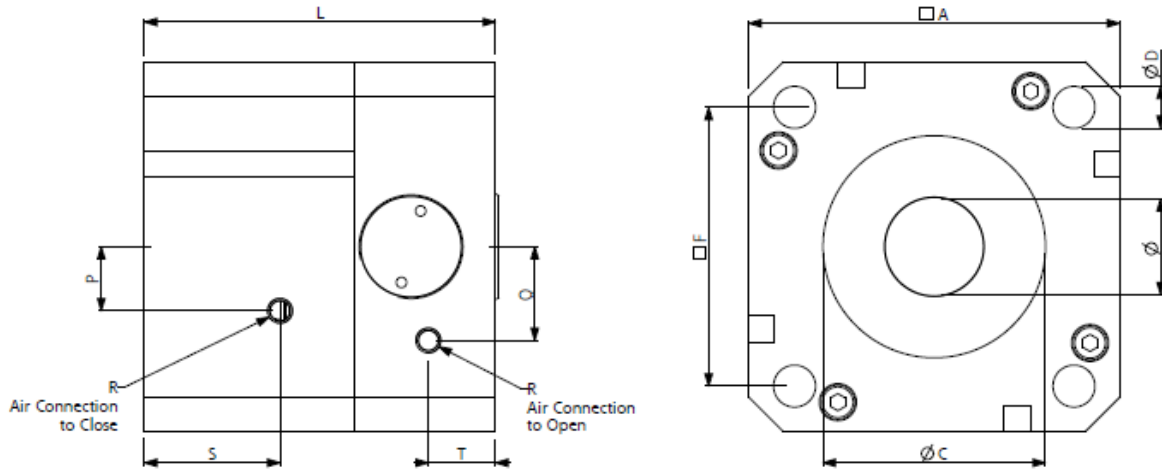
Harmonised standards **EN ISO 13849** and **EN 4414** are implemented.

Air quality shall be in compliance with **ISO 8573**

Operational details:

- Min. operating pressure: 5 bar (different operative pressure available as special execution)
- Max operating pressure: 10 bar
- Temperature range: -20°C ÷ +80°C
- Available with magnetic sensors: easy monitoring of opening and closure of the element

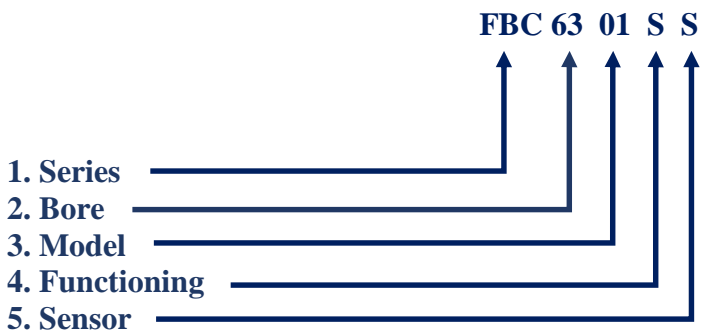




Type	Bore	Ø Shaft	Holding force (static)				A	C	D	F	L	P	Q	R	S	T	C bore depth	Piston rod extension
			M [N]	S [N] (at 6 bar)	E [N] (at 6 bar)	D [N]												
FBC	40	16	1000	1250	1250	2250	52	35	6.5	38	95	7	13	M5	47	21.3	20.1	75
FBC	50	20	1600	1900	1900	3500	65	40	8.5	46.5	71	0	15.5	M5	28.5	20.1	25.1	46
FBC	63	20	2500	3000	3000	5500	75	45	8.5	56.5	71	13	19	M5	27.4	13.6	25.1	46
FBC	80	25	4300	5000	5000	9300	95	45	10.5	72	82	17	-20	M5	31	27.2	30.1	52

Special executions available upon request

Ordering code:



Functioning	
S	Single action configuration "Normally Open" – AIR to CLOSE
E	Double action configuration "Normally Open" – AIR to CLOSE and to OPEN
M	Single action configuration "Normally Closed" – AIR to OPEN
D	Double action configuration "Normally Closed" – AIR to OPEN and to CLOSE